

# The Santa Monica

Best designs. Best packages. Best prices.



Lot 15 Woodville St "Bruckner Hills"

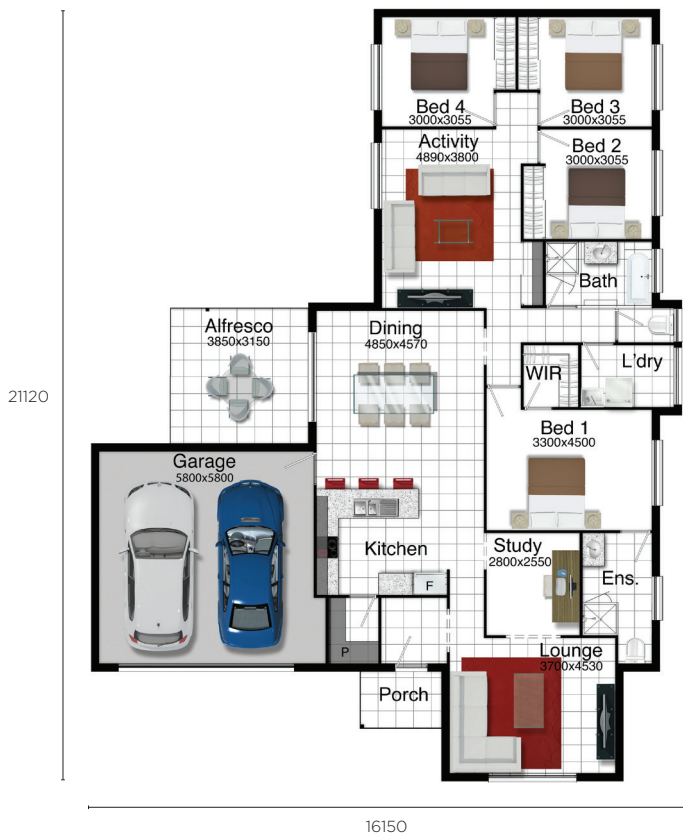
Boonah

Land Size: 808m<sup>2</sup>

HOUSE & LAND PRICE

**\$435,525**

Living Area	174.7m <sup>2</sup>
Garage Area	38.9m <sup>2</sup>
Alfresco Area	12.0m <sup>2</sup>
Patio Area	4.0m <sup>2</sup>
<b>Total Area</b>	<b>229.6m<sup>2</sup></b>



## PACKAGE INCLUDES:



- 25 Year Structural Guarantee\*
- 6 Star Energy Rating
- Bathroom and Ensuite
- Builder's Persona Range tiles and carpets
- Exposed Aggregate Driveway
- \$25,000 Freebies Upgrades
- 900mm Free Standing Cooker
- 2590mm High Ceilings
- 1200mm Front Entry Door
- Precast Letterbox with render
- Electrical Allowance
- Council Fees
- Upmarket Tapware

Lee Roebuck  
0413 057 335



**Fresh Homes**

Brisbane • Ipswich • Gold Coast • Sunshine Coast • Townsville : [freshhomes.com.au](http://freshhomes.com.au)

Plans and images are for illustration only. All elevations are masonry block with painted architectural textured coating. Brick finishes apply to SEQ only. Floor plan and elevation as shown in this brochure are artists impressions only and do not form any part of the contract to build. Standard plans and specifications take precedence over any design, elevation or brochure. These designs are exclusively the property of Fresh Homes and as such are copyright. QBCC No 1088603. Prices may change without notice. \*Applies to building structure only.